



# LED Badge Manual

V5.0

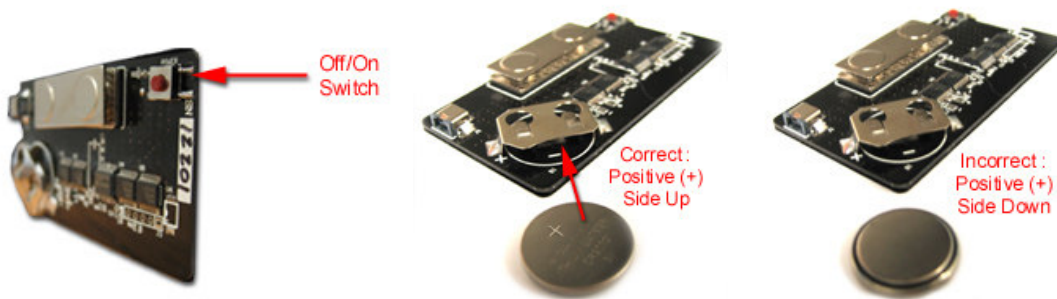


**Note: this product uses a magnet. People using pacemakers or who are sensitive to magnets must NOT use this device. Do not place this magnetic device near hotel/credit cards, floppies, or other items with magnetic stripes/materials which could possibly render them inoperable.**

## 1: General Information

Accessories for each LED Badge normally contain:

- LED Badge
- 3V CR2032 Lithium Battery
- Driver CD
- Optional Serial Cable



### 1.1 Turning On/Off your LED Badge

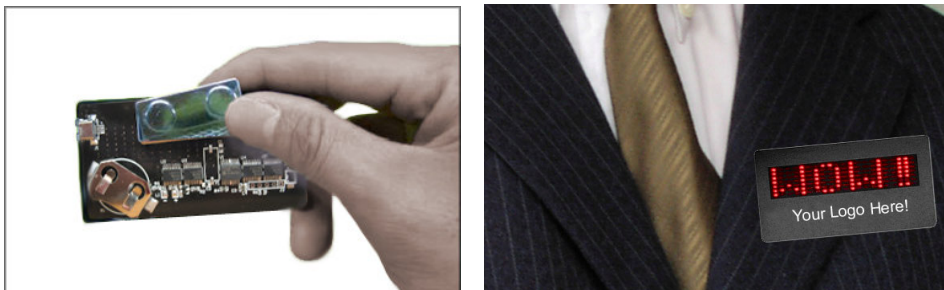
**Turn On:** Slide the 3V Lithium battery into its holder (+ positive side up as shown in the picture), snap it in and the stored message will run automatically. If the new battery doesn't display the message the battery has been inserted incorrectly, CHANGE THE BATTERY IMMEDIATELY. Turning on/off after the battery has been installed is done by pressing and holding the On/Off Switch for 3 - 4 seconds. This feature insures that the LED Badge is not powered on/off by accident.

**Turn Off:** Push the battery out in the opposite manner using a pencil or similar non-conducting tool, or, by pressing and holding the On/Off Switch for 3 - 4 seconds.

**To save batteries:** please remove the battery from the badge when the badge is not being used because the LED badge uses power and will slowly wear out the battery even if the display is turned off.

### 1.2: To wear your LED Badge

There is a set of magnetic plates at the back of the badge so that it may be used with clothing. Simply push the front magnetic plate upwards from the left or right side to remove it from the badge. Then hold the removed magnetic plate underneath your jacket/pocket/etc and adjust the position according to the desired location of the LED Badge, see example pictures below.

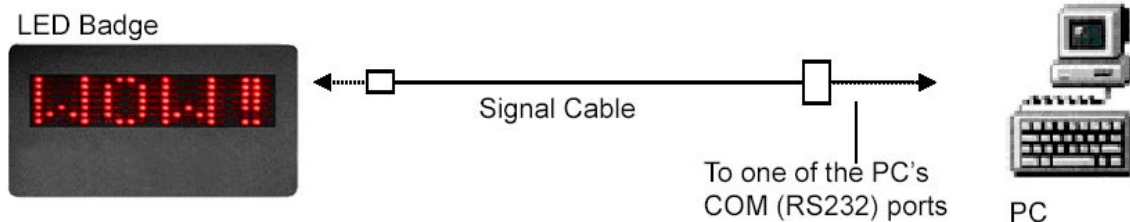


Copyright 2006 – Wonderlites, LLC. All rights reserved.

[www.Wonderlites.com](http://www.Wonderlites.com)

### 1.3: Connecting your LED Badge to a computer

You will need to plug the Serial cable port into the serial port of your laptop or desktop PC, and plug the other end into the LED Badge as shown below.



**NOTE: Please USE EXTRA CARE when connecting the cable to the LED Badge because the connectors on the cable and LED badge can be easily broken and are not warranted.**

## **2: Software Operation**

### 2.1: To Use the software on your PC

Run the LED Programmer program from the CD menu. **If you get an error your computer needs to have Microsoft .NET installed.** Run the Microsoft .NET Installer program from the CD menu. The programmer software will then work correctly.

### 2.2: To program your LED Badge

The LED badge programmer will start running and will search for available COM ports. It will detect those available, including USB-to-Serial port converters (normally detected as COM5 – COM8).

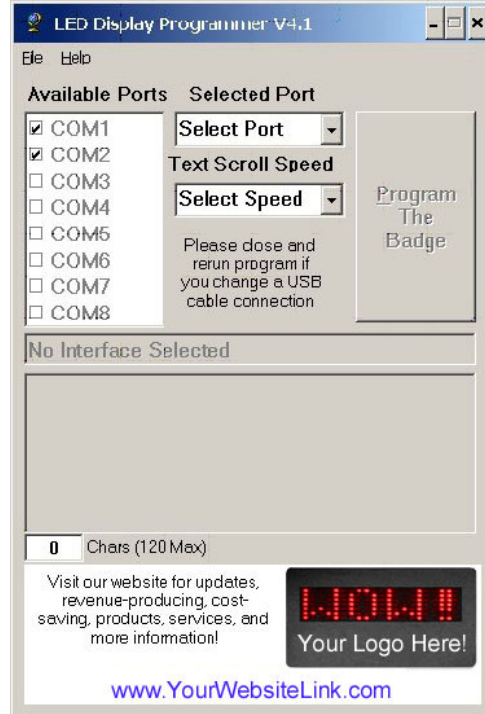
Those COM ports that are detected will be shown as checked in the “Available Ports” box.

#1. Select one of the available ports (checked) that corresponds to COM port your LED Badge cable is connected to.

#2. Select the “Text Scroll Speed”.

#3. Type in your message. You have a maximum of 120 characters for your message.

#4. Make sure your badge is powered on, plugged into the cable, then click the “Program the Badge” button.



**Hint: to make messages are easier to read – use short messages, add extra spaces between each word while running at the fastest speed (message is read quickly and spaces between each word help comprehension). Enjoy your custom message!**